



At the heart of the image

Nikon th100
anniversary



I AM THE NEW PERSPECTIVE



D850

www.europe-nikon.com



• Lens: AF-S NIKKOR 70-200mm f/2.8E FL ED VR • Exposure: [M] mode, 1/320 s, f/4 • White balance: Direct sunlight • Sensitivity: ISO 64 • Picture Control: Auto © Jerry Ghionis



• Lens: AF-S NIKKOR 70-200mm f/2.8E FL ED VR • Exposure: [M] mode, 1/200 s, f/2.8 • White balance: Direct sunlight • Sensitivity: ISO 3200 • Picture Control: Standard © Jerry Ghionis



45.7-megapixel FX-format CMOS image sensor offering ISO 64-25600

- Capture stunning detail with 45.7 effective megapixels — the highest in Nikon's history.
- Backside illumination sensor architecture and powerful noise reduction by the EXPEED 5 image-processing engine realize ISO 25600.
- Provides images with a wide dynamic range at ISO 64 — the lowest native setting of any camera manufacturer.
- EXPEED 5 renders delicate tonality in extremely vivid colors.



Silent photography for discreetly capturing every detail in full sharpness

- Using an electronic shutter, the silent* photography function in live view allows the capture of 45-megapixel images with no mechanical blur or shutter release sound: Perfect for wedding ceremonies.
- Supports approx. 6-fps continuous shooting at 45 megapixels or 30 fps at 8.6 megapixels.

* In M and A modes. Aperture drive sound occurs in P and S modes.

Continuous shooting at approx. 9 fps and 153-point AF system to capture fleeting emotion in sharp images

- Enables continuous shooting at approx. 9 fps with the optional MB-D18 Multi-Power Battery Pack* and approx. 7 fps with the body only.
- Providing over 130% of the D810's frame coverage, the 153-point AF system with 99 cross sensors delivers accurate focusing and compositional freedom.

* With EN-EL18b/EN-EL18a Rechargeable Li-ion Battery inserted. Optional BL-5 Battery Chamber Cover and MH-26a/MH-26 Battery Charger required for use of the EN-EL18b/EN-EL18a.

Array of versatile functions and features for wedding photographers

- Three RAW sizes: 45.4 MP for ultra-large results, 25.6 MP in medium, or small which is ideal for digital albums with 11.4 MP.
- Unique image area option with a 1:1 aspect ratio for expanded creativity.
- Highlight-weighted metering allows retention of subtle tones and nuances of color in clothes.
- Tilting 8-cm/3.2-in. 2359k-dot monitor with more comprehensive touch functionality for more intuitive operation.
- Long battery life permits shooting of up to approx. 1840 still images*¹ with the body alone, and 5140 images*² with the optional MB-D18 Multi-Power Battery Pack.

*¹ Based on CIPA Standards. With the EN-EL15a Rechargeable Li-ion Battery.

*² Based on CIPA Standards. With the EN-EL15a Rechargeable Li-ion Battery in the body and the EN-EL18b/EN-EL18a in the MB-D18. Optional BL-5 Battery Chamber Cover and MH-26a/MH-26 Battery Charger required for use of the EN-EL18b/EN-EL18a.



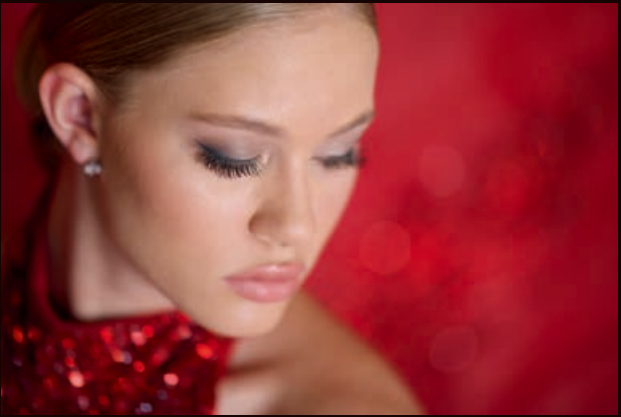
1:1 image area





NIKKOR lenses & Speedlight

100
million
NIKKOR



AF-S NIKKOR 105mm f/1.4E ED

This fast, medium-telephoto lens embodies NIKKOR's unique design concept of "three-dimensional high fidelity." It provides a bokeh effect with smooth alteration from the focus plane to ensure natural depth of subjects. Superior optical performance achieves high resolution even in the peripheral areas, sharp rendering of distant subjects even at maximum aperture, and exceptional reproduction of point light sources.



AF-S NIKKOR 24-70mm f/2.8E ED VR

An aspherical ED glass element – a first for NIKKOR lenses – works with ED glass, aspherical lens and HRI lens elements, as well as Nano Crystal Coat to achieve remarkably high optical performance. Evolved Vibration Reduction (VR) provides an effect equivalent to a shutter speed 4.0 stops* faster. Other notable features include an electromagnetic diaphragm mechanism, fluorine coat and highly durable body.



AF-S NIKKOR 70-200mm f/2.8E FL ED VR

This fast f/2.8 telephoto zoom with reduced weight enables highly agile shooting in diverse situations. Movable parts and other sections are sealed to maximize dust- and drip resistant performance. Further enhanced optical performance is realized with a newly developed optical system and the adoption of fluorite, ED glass and HRI lens elements, as well as Nano Crystal Coat. The VR system provides a powerful effect equivalent to a shutter speed 4.0 stops* faster in Normal mode. AF drive and AF tracking performance have also been enhanced, while stable AE control is obtained with the adoption of an electromagnetic diaphragm.



SB-5000 Speedlight

Versatile, high-output Speedlight supporting radio-controlled Advanced Wireless Lighting*¹ delivering complete mastery over your lighting whether indoors or outdoors. The SB-5000 can communicate via radio from distances up to approx. 30 m/98 ft*² with minimum interference from obstacles or ambient lighting. Despite featuring a powerful guide number of 34.5/113 (m/ft, ISO100)*³, the SB-5000 can fire consecutively for longer than conventional models thanks to its cooling system. Advanced Wireless Lighting with optical-controlled units such as the SB-910 is also possible with the D850.



*1 Radio-controlled AWL with the D850 and SB-5000 requires the optional WR-R10 Wireless Remote Controller and WR-A10 Wireless Remote Adapter.
*2 Approx. range at height of about 1.2 m/3.9 ft; varies according to weather conditions, presence of obstacles and radio communication condition.
*3 At 35 mm zoom head position, in FX format, standard illumination pattern.

* Based on CIPA Standards. This value is achieved when attached to an FX-format digital SLR camera, with zoom set at the maximum telephoto position.

Nikon Digital SLR Camera D850 Specifications

Type of camera	Single-lens reflex digital camera
Lens mount	Nikon F mount (with AF coupling and AF contacts)
Effective angle of view	Nikon FX format
Effective pixels	45.7 million
Image sensor	35.9 × 23.9 mm CMOS sensor
Total pixels	46.89 million
Dust-reduction system	Image sensor cleaning, Image Dust Off reference data (Capture NX-D software required)
Image size (pixels)	• FX (36×24) image area: 8256 × 5504 (L: 45.4 million), 6192 × 4128 (M: 25.6 million), 4128 × 2752 (S: 11.4 million) • 1.2× (30×20) image area: 6880 × 4584 (L: 31.5 million), 5152 × 3432 (M: 17.6 million), 3440 × 2288 (S: 7.8 million) • DX (24×16) image area: 5408 × 3600 (L: 19.4 million), 4048 × 2696 (M: 10.9 million), 2704 × 1800 (S: 4.8 million) • 5 : 4 (30×24) image area: 6880 × 5504 (L: 37.8 million), 5152 × 4120 (M: 21.2 million), 3440 × 2752 (S: 9.4 million) • 1 : 1 (24×24) image area: 5504 × 5504 (L: 30.2 million), 4128 × 4128 (M: 17.0 million), 2752 × 2752 (S: 7.5 million) • FX-format photographs taken during movie recording: 8256 × 4640 (L: 38.3 million), 6192 × 3480 (M: 21.5 million), 4128 × 2320 (S: 9.5 million) • DX-format photographs taken during movie recording: 5408 × 3040 (L: 16.4 million), 4048 × 2272 (M: 9.1 million), 2704 × 1520 (S: 4.1 million)
File format	• NEF (RAW): 12 or 14 bit (lossless compressed, compressed or uncompressed); large, medium and small available (medium and small images are recorded at a bit depth of 12 bits using lossless compression) • TIFF (RGB) • JPEG: JPEG-Baseline compliant with fine (approx. 1 : 4), normal (approx. 1 : 8) or basic (approx. 1 : 16) compression; optimal quality compression available • NEF (RAW)+JPEG: Single photograph recorded in both NEF (RAW) and JPEG formats
Picture Control System	Auto, Standard, Neutral, Vivid, Monochrome, Portrait, Landscape, Flat; selected Picture Control can be modified; storage for custom Picture Controls
Storage media	XDD and SD (Secure Digital) and UHS-II compliant SDHC and SDXC memory cards
Dual card slots	Either card can be used for primary or backup storage or for separate storage of NEF (RAW) and JPEG images; pictures can be copied between cards
File system	DCF 2.0, Exif 2.31, PictBridge
Viewfinder	Eye-level pentaprism single-lens reflex viewfinder
Frame coverage	• FX (36×24): Approx. 100% horizontal and 100% vertical • 1.2× (30×20): Approx. 97% horizontal and 97% vertical • DX (24×16): Approx. 97% horizontal and 97% vertical • 5:4 (30×24): Approx. 97% horizontal and 100% vertical • 1:1 (24×24): Approx. 97% horizontal and 100% vertical
Magnification	Approx. 0.75× [50 mm f/1.4 lens at infinity, -1.0 m ⁻¹]
Eye point	17 mm (-1.0 m ⁻¹); from center surface of viewfinder eyepiece lens)
Dioptr adjustment	-3 to +1 m ⁻¹
Focusing screen	Type B BriteView Clear Matte Mark VIII screen with AF area brackets (framing grid can be displayed)
Reflex mirror	Quick return
Depth-of-field preview	Pressing Pv button stops lens aperture down to value selected by user (A and M modes) or by camera (P and S modes)
Lens aperture	Instant return, electronically controlled
Compatible lenses	Compatible with AF NIKKOR lenses, including type G, E and D lenses (some restrictions apply to PC lenses), and DX lenses [using DX (24×16) image area], AI-P NIKKOR lenses, and non-CPU AI lenses (exposure modes A and M only); IX-NIKKOR lenses, lenses for the F3AF, and non-AI lenses cannot be used The electronic rangefinder can be used with lenses that have a maximum aperture of f/5.6 or faster (the electronic rangefinder supports 15 focus points with lenses that have a maximum aperture of f/8 or faster, of which 9 points are available for selection)
Shutter type	Electronically controlled vertical-travel focal-plane mechanical shutter; electronic front-curtain shutter available in quiet shutter-release, quiet continuous shutter-release and mirror up release modes
Shutter speed	1/8000 to 30 s in steps of 1/3, 1/2 or 1 EV, bulb, time, X250
Flash sync speed	X=1/250 s; synchronizes with shutter at 1/250 s or slower; auto FP high-speed sync supported
Release modes	S (single frame), Ci (continuous low speed), Cn (continuous high speed), Q (quiet shutter-release), Qc (quiet continuous shutter-release), Ⓢ (self-timer), Mup (mirror up)
Approximate frame advance rate	• With an EN-EL18b battery inserted in an MB-D18 battery pack Ci : 1 to 8 fps, Cn : 9 fps, Qc : 3 fps • Other power sources Ci : 1 to 6 fps, Cn : 7 fps, Qc : 3 fps
Self-timer	2 s, 5 s, 10 s, 20 s; 1 to 9 exposures at intervals of 0.5, 1, 2 or 3 s
Exposure metering system	TTL exposure metering using RGB sensor with approx. 180K (180,000) pixels
Exposure metering modes	• Matrix: 3D color matrix metering III (type G, E and D lenses); color matrix metering III (other CPU lenses); color matrix metering available with non-CPU lenses if user provides lens data • Center-weighted: Weight of 75% given to 12 mm circle in center of frame; diameter of circle can be changed to 8, 15 or 20 mm, or weighting can be based on average of entire frame (non-CPU and AF-S Fisheye NIKKOR 8-15mm f/3.5-4.5E ED lenses use 12-mm circle) • Spot: Meters 4 mm circle (about 1.5% of frame) centered on selected focus point (on center focus point when non-CPU or AF-S Fisheye NIKKOR 8-15mm f/3.5-4.5E ED lens is used) • Highlight-weighted: Available with type G, E and D lenses
Metering range	• Matrix or center-weighted metering: -3 to 20 EV • Spot metering: 2 to 20 EV
(ISO 100, f/1.4 lens, 20°C/68°F)	• Highlight-weighted metering: 0 to 20 EV
Exposure meter coupling	Combined CPU and AI
Exposure modes	Programmed auto with flexible program (P); shutter-priority auto (S); aperture-priority auto (A); manual (M)
Exposure compensation	-5 to +5 EV in increments of 1/3, 1/2 or 1 EV
Exposure lock	Luminosity locked at detected value
ISO sensitivity	ISO 64 to 25600 in steps of 1/3, 1/2 or 1 EV; can also be set to approx. 0.3, 0.5, 0.7 or 1 EV
(Recommended Exposure Index)	(ISO 32 equivalent) below ISO 64 or to approx. 0.3, 0.5, 0.7, 1 or 2 EV (ISO 102400 equivalent) above ISO 25600; auto ISO sensitivity control available
Active D-Lighting	Can be selected from auto, extra high, high, normal, low or off
Autofocus	Multi-CAM 20K autofocus sensor module with TTL phase detection, fine-tuning and 153 focus points (including 99 cross-type sensors and 15 sensors that support f/8), of which 55 (35 cross-type sensors and 9 f/8 sensors) are available for selection
AF detection range	-4 to +20 EV (ISO 100, 20°C/68°F)
Lens servo	• Autofocus (AF): Single-servo AF (AF-S); continuous-servo AF (AF-C); predictive focus tracking automatically activated according to subject status • Manual focus (M): Electronic rangefinder can be used
Focus point	153 focus points, of which 55 or 15 are available for selection
AF-area modes	Single-point AF, 9-, 25-, 72- or 153-point dynamic-area AF, 3D-tracking, group-area AF, auto-

area AF	
Focus lock	Focus can be locked by pressing shutter-release button halfway (single-servo AF) or by pressing the center of the sub-selector
Flash control	TTL: i-TTL flash control using RGB sensor with approx. 180K (180,000) pixels; i-TTL balanced fill-flash for digital SLR is used with matrix, center-weighted and highlight-weighted metering, standard i-TTL fill-flash for digital SLR with spot metering
Flash modes	Front-curtain sync, slow sync, rear-curtain sync, red-eye reduction, red-eye reduction with slow sync, slow rear-curtain sync, off
Flash compensation	-3 to +1 EV in increments of 1/3, 1/2 or 1 EV
Flash-ready indicator	Lights when optional flash unit is fully charged; flashes after flash is fired at full output
Accessory shoe	ISO 518 hot-shoe with sync and data contacts and safety lock
Nikon Creative Lighting System (CLS)	i-TTL flash control, radio-controlled Advanced Wireless Lighting, optical Advanced Wireless Lighting, modeling illumination, FV lock, color information communication, auto FP high-speed sync, AF-assist for multi-area AF, unified flash control
Sync terminal	ISO 519 sync terminal with locking thread
White balance	Auto (3 types), natural light auto, incandescent, fluorescent (7 types), direct sunlight, flash, cloudy, shade, preset manual (up to 6 values can be stored, spot white balance measurement available during live view), choose color temperature (2500 K to 10000 K), all with fine-tuning
Bracketing types	Exposure, flash, white balance and ADL
Live view modes	📷 (photo live view), 🎬 (movie live view)
Live view lens servo	• Autofocus (AF): Single-servo AF (AF-S); full-time-servo AF (AF-F) • Manual focus (M)
Live view AF-area modes	Face-priority AF, wide-area AF, normal-area AF, pinpoint AF, subject-tracking AF
Live view autofocus	Contrast-detect AF anywhere in frame (camera selects focus point automatically when face-priority AF or subject-tracking AF is selected)
Movie metering system	TTL exposure metering using main image sensor
Movie metering modes	Matrix, center-weighted or highlight-weighted
Frame size (pixels)	• 3840 × 2160 (4K UHD); 30p (progressive), 25p, 24p • 1920 × 1080; 60p, 50p, 30p, 25p, 24p
and frame rate	• 1280 × 720; 60p, 50p • 1920 × 1080 (slow-mo); 30p ×4, 25p ×4, 24p ×5 Actual frame rates for 60p, 50p, 30p, 25p and 24p are 59.94, 50, 29.97, 25 and 23.976 fps respectively; quality selection available at all sizes except 3840 × 2160 (when quality is fixed at 🌟) and 1920 × 1080 slow-mo (when quality is fixed at "normal")
File format	MOV, MP4
Video compression	H.264/MPEG-4 Advanced Video Coding
Audio recording format	Linear PCM, AAC
Audio recording device	Built-in stereo or external microphone; sensitivity adjustable
Movie ISO sensitivity	• Exposure modes P , S and A : Auto ISO sensitivity control (ISO 64 to Hi 2) with selectable upper limit • Exposure mode M : Auto ISO sensitivity control (ISO 64 to Hi 2) available with selectable upper limit; manual selection (ISO 64 to 25600 in steps of 1/3, 1/2 or 1 EV) with additional options available equivalent to approx. 0.3, 0.5, 0.7, 1 or 2 EV (ISO 102400 equivalent) above ISO 25600
(Recommended Exposure Index)	
Movie Active D-Lighting	Can be selected from same as photo settings, extra high, high, normal, low or off
Maximum movie recording length	29 min, 59 s
Other movie options	Index marking, time-lapse movies, electronic vibration reduction
Monitor	8-cm/3.2-in., approx. 2359k-dot (XGA) tilting TFT touch-sensitive LCD with 170° viewing angle, approx.100% frame coverage, and manual monitor brightness control
Playback	Full-frame and thumbnail (4, 9 or 72 images) playback with playback zoom, playback zoom cropping, movie playback, photo and/or movie slide shows, histogram display, highlights, photo information, location data display, picture rating and auto image rotation
USB	SuperSpeed USB (USB 3.0 Micro-B connector); connection to built-in USB port is recommended
HDMI output	Type C HDMI connector
Audio input	Stereo mini-pin jack (3.5-mm diameter; plug-in power supported)
Audio output	Stereo mini-pin jack (3.5-mm diameter)
Ten-pin remote terminal	Can be used to connect optional MC-30A/MC-36A Remote Cord, ML-3 Module Remote Control Set, WR-R10 (requires WR-A10 Wireless Remote Adapter) or WR-1 Wireless Remote Controller, GP-1/GP-1A GPS Unit
Wireless	• Standards: IEEE 802.11b, IEEE 802.11g • Operating frequency: 2412 to 2462 MHz (channels 1 to 11) • Maximum output power: 8.5 dBm (EIRP) • Authentication: Open system, WPA2-PSK
Bluetooth	• Communication protocols: Bluetooth Specification Version 4.1 • Operating frequency: 2402 to 2480 MHz (Bluetooth), 2402 to 2480 MHz (Bluetooth Low Energy)
Range (line of sight)	Approx. 10 m/32 ft without interference; range may vary with signal strength and presence or absence of obstacles
Supported languages	Arabic, Bengali, Bulgarian, Chinese (Simplified and Traditional), Czech, Danish, Dutch, English, Finnish, French, German, Greek, Hindi, Hungarian, Indonesian, Italian, Japanese, Korean, Marathi, Norwegian, Persian, Polish, Portuguese (Portugal and Brazil), Romanian, Russian, Serbian, Spanish, Swedish, Tamil, Telugu, Thai, Turkish, Ukrainian, Vietnamese
Battery	One EN-EL15a/EN-EL15* Rechargeable Li-ion Battery
Battery pack	Optional MB-D18 Multi-Power Battery Pack with one EN-EL18b/EN-EL18a/EN-EL18* Rechargeable Li-ion Battery (available separately), one EN-EL15a/EN-EL15* Rechargeable Li-ion Battery or eight AA alkaline, Ni-MH or lithium batteries; an MH-26a/MH-26 Battery Charger and BL-5 Battery Chamber Cover (both available separately) are required when using EN-EL18b/EN-EL18a/EN-EL18* batteries
AC adapter	EH-5c/EH-5b AC Adapter; requires EP-5B Power Connector (available separately)
Tripod socket	1/4 in. (ISO 1222)
Dimensions (W × H × D)	Approx. 146 × 124 × 78.5 mm/5.8 × 4.9 × 3.1 in.
Weight	Approx. 1005 g/2 lb 3.5 oz with battery and XQD memory card but without body cap; approx. 915 g/2 lb 0.3 oz (camera body only)
Operating environment	Temperature: 0 to 40°C/32 to 104°F; humidity: 85% or less (no condensation)
Supplied accessories	EN-EL15a Rechargeable Li-ion Battery, MH-25a Battery Charger, DK-17F Fluorine-Coated (may differ by country or area)
Finder Eyepiece, UC-E22 USB Cable, HDMI/USB Cable Clip, AN-DC18 Strap, BF-1B Body Cap	
* Fewer pictures/shorter movies can be taken on a single charge with an EN-EL18 than an EN-EL18b/EN-EL18a, or with an EN-EL15 than an EN-EL15a.	

• XQD is a trademark of Sony Corporation. • The SD, SDHC and SDXC logos are trademarks of the SD-3C, LLC. • PictBridge is a trademark. • HDMI, the HDMI logo and High-Definition Multimedia Interface are trademarks or registered trademarks of HDMI Licensing LLC. • The Bluetooth® word mark and logos are registered trademarks owned by Bluetooth SIG, Inc. and any use of such marks by Nikon Corporation is under license. • Other products and brand names are trademarks or registered trademarks of their respective companies. • Images in viewfinders, on LCDs and monitors shown in this material are simulated.



Specifications and equipment are subject to change without any notice or obligation on the part of the manufacturer. November 2017 ©2017 Nikon Corporation

	WARNING	TO ENSURE CORRECT USAGE, READ MANUALS CAREFULLY BEFORE USING YOUR EQUIPMENT. SOME DOCUMENTS CAN BE DOWNLOADED FROM downloadcenter.nikonimglib.com.
--	----------------	---

Visit the Nikon Europe website at: www.europe-nikon.com



Nikon Europe B.V. Tripolis 100, Burgerweeshuispad 101, 1076 ER Amsterdam, The Netherlands
NIKON CORPORATION Shinagawa Intercity Tower C, 2-15-3, Konan, Minato-ku, Tokyo 108-6290, Japan www.nikon.com